

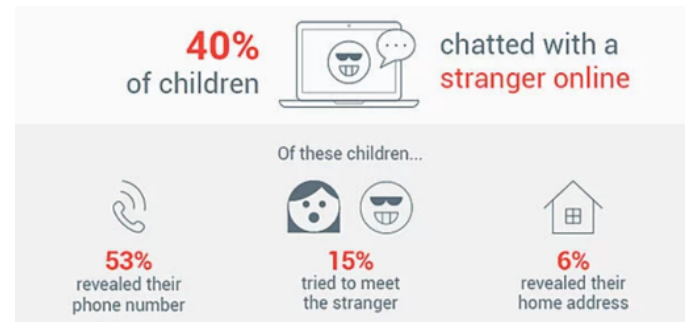


## Monitoring Students' Online Activity

### Risks of Social Media

While social media can be an engaging method of communication, such platforms can also pose risks. For your child, these risks include:

- Being exposed to inappropriate or upsetting content like mean, aggressive, violent or sexual comments or images
- 70% of children 7 to 18 years have accidentally encountered online pornography, often through a web search while doing homework
- Uploading inappropriate content like embarrassing or provocative photos or videos of themselves or others
- Sharing personal information with strangers – for example, phone numbers, date of birth or location
- Cyberbullying
- Exposure to too much targeted advertising and marketing
- 1 in 5 youths ages 10-17 received a sexual solicitation or were approached online



### Talking to Children About Internet Safety

While there are many parental control apps and software that parents can find, it's important to set ground rules that let children know what you expect of them when using social media accounts. Make sure your children know:

- Never share their real name or location with a stranger online
- Not to accept friend or follower requests from people they don't know
- Never share passwords with anyone, not even their best friends

Parents should also know what social media accounts their children are using and ensure they have ways to check in on those accounts. Most social media sites have information on parental controls and safety, including Instagram, Facebook, Twitter, and Snapchat.

**Talk to your children! Keep an open line of communication and make sure that they feel comfortable turning to you when they have problems online.**



**To report obscene material sent to a child, a misleading domain name or misleading words or images on the Internet, file a report on the National Center for Missing and Exploited Children (NCMEC)'s website at [www.cybertipline.com](http://www.cybertipline.com), or call 1-800-843-5678. Your report will be forwarded to a law enforcement agency for investigation and action.**